



Ferry Road, Teddington TW11 9NN Tel: 020 8977 7558 www.landmarkartscentre.org

STAGE HIRE 2021

Location: Based on the ground floor and east side of the Landmark Arts Centre, a Grade II* listed 19th century former church building. Versatile open space providing impressive views over the main hall with a height of over 20 metres. Dimensions: Sprung floor: 9.20mx7.80m; marble floor: 7.70mx2.45m / total: 89 square metres.

Facilities: Sprung floor covered with vinyl tiles. Historic, original marble flooring to the rear providing a decorative focal point. Natural and artificial light, spotlights, access to multiple power sockets and to a CD sound system with ipod connection. Overhead gas heating, electricity and cleaning are included in hire fee. Access to toilet and kitchen facilities. Tables, chairs, extension leads and a flipchart can be provided. The Stage can be made self-contained and enclosed using a concertina screen.

Suitable for: Activity and sports related courses, workshops, dance, drama, yoga, meditation, after school clubs, children's parties, receptions, meetings and seminars.

Accessibility: Ground floor location with three steps leading up to Stage area. Disabled access to the building is via an entry ramp, with a platform lift providing subsequent access to the Stage for wheelchair users. Disabled toilet facilities available for those with limited mobility or wheelchair users. Please discuss any special needs requirement at the point of booking. Extremely limited on-site parking but free parking is available in adjacent residential roads. Disabled parking for blue badge holders can be reserved upon request in advance and subject to availability.

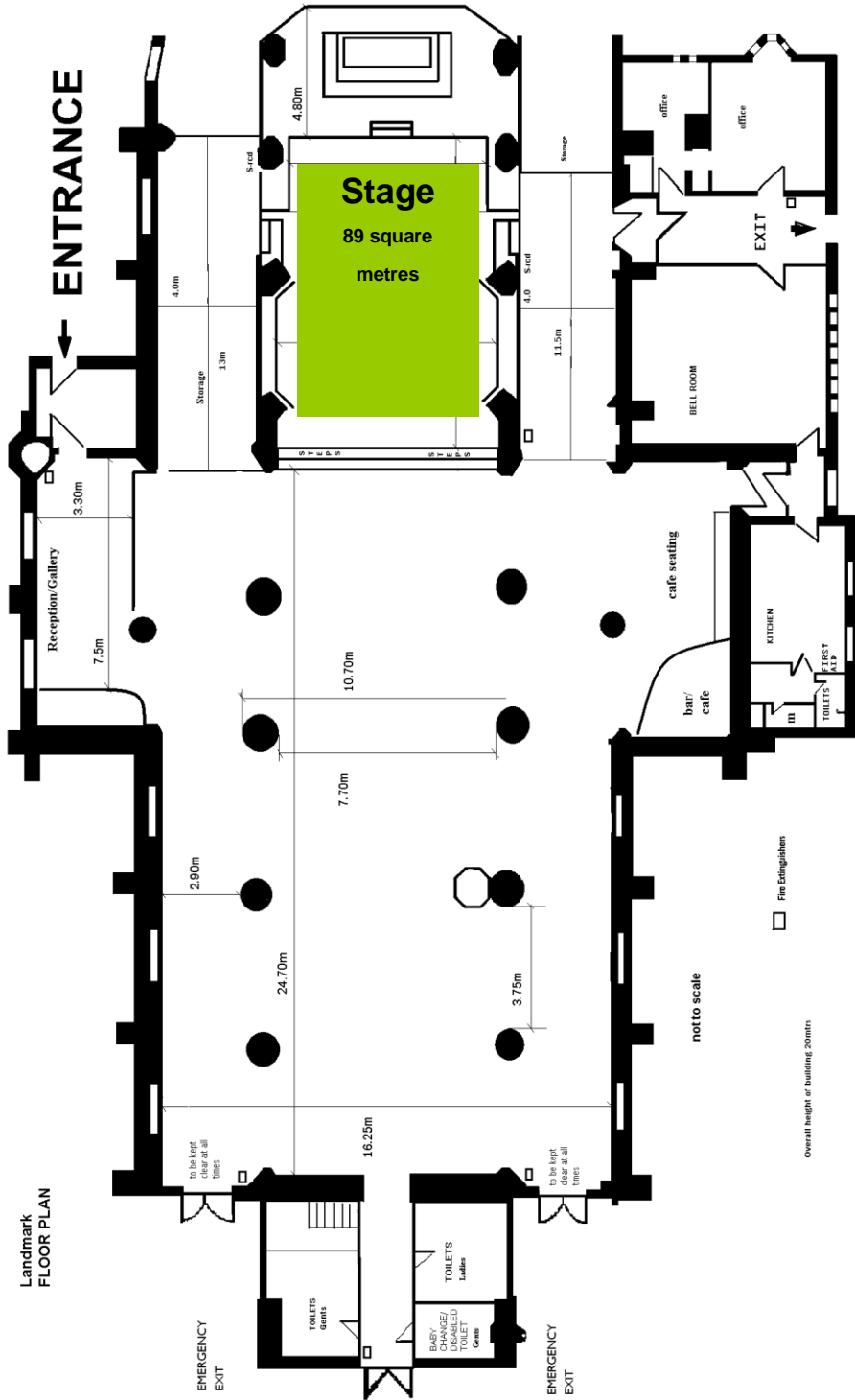
Capacity: Maximum 70 people at any time.
Activity classes: 15-20 people, depending on set-up.
Theatre style: 50 people.

Hire Charge: Ad-hoc community bookings: **£36.00 p/hr.**
Regular term bookings, min. 10 weeks with 20% discount: **£30.00 p/hr**
There is a minimum hire time of 1 hour for weekday bookings and 3 hours for weekend bookings and there may be an additional charge for extra Landmark staff if required. Please ensure that you allow adequate set up and clearance time when making a booking.

Payments: Payment in advance of booking as per terms and conditions.
We accept payment by BACS, cheque, debit card or in cash at our office.

The Landmark Arts Centre is an independent charity. Hiring the Centre directly supports our community arts programme.

Registered Charity No: 1047080.



STAGE HIRE PHOTO GALLERY

