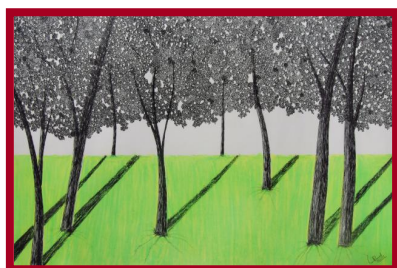


VISUAL ARTS

Creative Sketchbook



6 weeks **from 31st October 2017**
TUESDAY **2.00-4.30pm**
£105.00 **excluding materials**
Tutor: **Emily Burton**
Dates: **31 Oct; 7, 14, 21, 28 Nov; 5 Dec.**

Ferry Road, Teddington,
Middlesex, TW11 9NN
Telephone: 020 8977 7558
Fax: 020 8977 4830
www.landmarkartscentre.org
email: info@landmarkartscentre.org

COURSE PROJECT: **Memories and Identity**

Creative Sketchbook is a drawing course using a sketchbook with a mixed media approach. This course includes working from personal objects and treasured photographs. Amongst other projects you will make a simple sketchbook based on an experience or memory and create images using simple and experimental printmaking techniques.

CORE SKILLS:

- Exploring drawing**
Experimenting with different media, gestural methods, mark-making techniques, tonal contrasts, shapes, spaces and proportion.
- Experimenting with colour**
Experimenting with watercolours, pastels, colour pencils or felt pens.
- Texture and detail**
Exploring ways to create texture through different techniques
- Collage**
Using photographs and cuttings, an approach to cropping and to collecting reference material for a project
- The purpose of a sketchbook**
Developing creative visual ideas and how to research for specific art projects

MATERIALS LIST:

A4 or A3 cartridge hardback sketchbook, collection of drawing pencils (2H, HB, 2B, 6B), willow charcoal, ruler, glue, scissors. A selection of coloured media which could include: water-soluble pencils or crayons, pastels, watercolours or felt pens. Optional: Any other personally preferred materials e.g. inks, pens, paints, conte. A craft knife/ scalpel and recycled papers are sometimes useful. Materials will be discussed during your first session with your tutor and you may have already some art materials which can be used.

ADDITIONAL INFORMATION:

- Please note that there is no parking on site other than the four bays by the wooden fence to the left of the building. These are clearly marked with **white** signs as parking for the Landmark Arts Centre. All other parking on site is for residents only. If you park in a resident's bay you are liable to get a parking fine.
- Cancellation Policy: we regret that no refunds are possible should you cancel your booking. If there is a waiting list and we are able to re-sell your place a refund may be payable.
- Payments by credit/debit card incur a £1 charge.
- For bookings and queries please contact our office on 020 8977 7558 or email education@landmarkartscentre.org.
- We will never release your details to other organisations for third party marketing purposes. We may use your address and email to inform you of the forthcoming Landmark Arts Centre programme. Please let us know if you do not wish to be contacted.

Landmark Arts Centre Ltd
Charity No: 1047080
Registered in England No. 3061090